

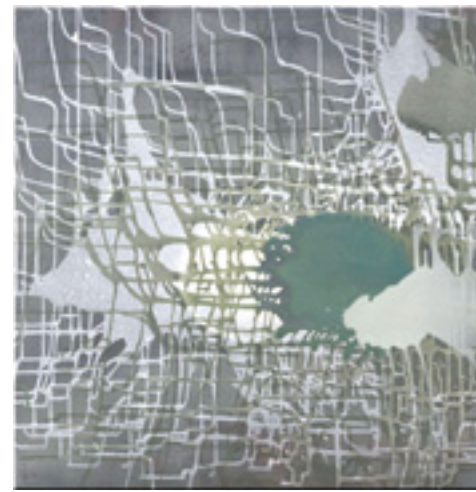


Frank Morris  
Born 1956 Toowoomba Qld

Tongue 2006  
Oils and Acrylic on Plywood  
65 x 73 x 1.5 cm  
\$ 1,800



Tongue 2006  
Oils and Acrylic on Plywood  
76 x 39 x 1.5 cm  
\$ 1,800



Su Baker  
Born 1955 Perth WA

Light Spill (Detail) 2004  
Acrylic on Canvas  
100 x 120 x 3 cm  
\$ 3,300



Chaos and Control # 5 2006  
Acrylic on Canvas  
85 x 85 x 3 cm  
\$ 2,800



Jánis Nedéla  
Born 1955 Albany WA

Ephemera #1 2006  
Acrylic on Canvas  
85 x 85 x 4 cm  
\$ 3,300



Ephemera #2 2006  
Acrylic on Canvas  
85 x 85 x 4 cm  
\$ 3,300



Susanna Castleden  
Born 1968 London England

Cyclone 2006  
Gesso on Plywood  
85 x 85 x 3.5 cm  
\$ 2,200



White Out 2006  
Gesso on Plywood  
85 x 85 x 3.5 cm  
\$ 2,200

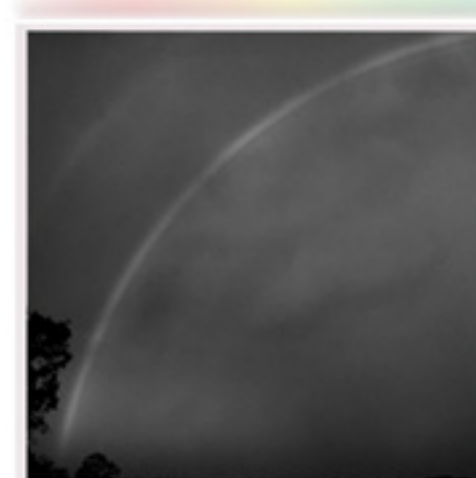


Kevin Robertson  
Born 1964 Norseman WA

Pink Death 2006  
Oil on Canvas  
85 x 85 x 2 cm  
\$ 2,800



Orange Shower Scene 2006  
Oil on Belgian Linen  
85 x 85 x 2 cm  
\$ 2,800



Lesley Duxbury  
Born 1950 Acrinton England

Double Moonbow #3 2006  
Dptych  
Inkjet Prints, Acrylic on Wood  
Each panel 85 x 85 cm  
Overall 85 x 180 cm  
\$ 4,000



Mike Singe  
Born 1970 Perth WA

Butterfly Knot 2006  
Gesso on Canvas  
85 x 85 x 4 cm  
\$ 2,200



In Line Figure 8 Loop 2006  
Gesso on Canvas  
85 x 85 x 4 cm  
\$ 2,200

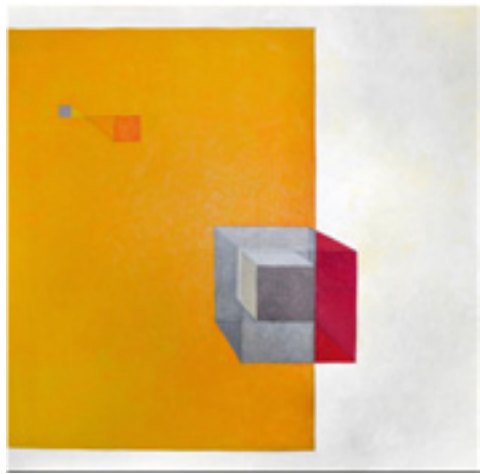


Sarah Elson  
Born 1971 Tanunda SA



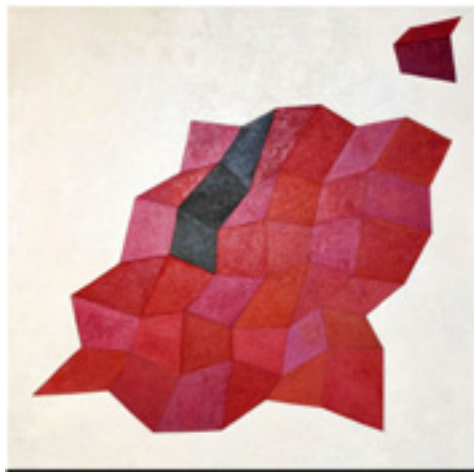
moTH'-er 2005 (Detail Views)  
Metal, Recycled Silver and Copper  
Alloys  
Each component 100 x 4 x 2 cm  
16 components 120 x 180 cm installed  
\$ 9,000





Caspar Fairhall  
Born 1969 Perth WA

Five Minutes from Next 2006  
Oil on Canvas  
83.5 x 83.5 x 3.5 cm  
\$ 2,200



Slow Fast Articulation 2006  
Oil on Canvas  
83.5 x 83.5 x 3.5 cm  
\$ 2,200



Richard Gunning  
Born 1961 Perth WA

Studio Corner early Morning 2006  
Oil on Canvas  
85 x 85 cm  
\$ 4,500

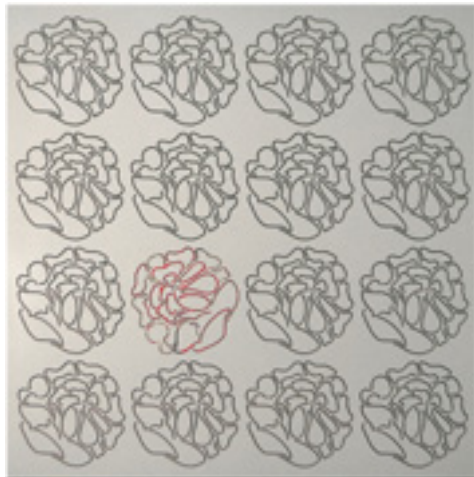


Studio with open Door 2006  
Oil on Canvas  
85 x 85 cm  
\$ 4,500



Pamela Gaunt  
Born 1952 England

Cut Roses I 2006  
Laser routed mdf, Automotive Paint  
Acrylic, Gouache, Curtain Roses  
85 x 85 x 5 cm  
\$ 2,200

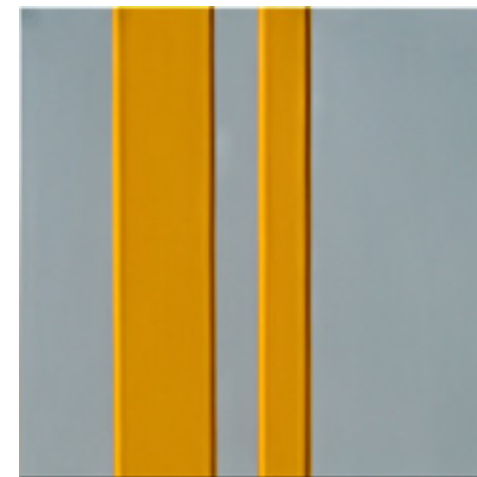


Cut Roses III 2006  
Laser routed mdf, Automotive Paint  
Acrylic, Gouache, Curtain Roses  
85 x 85 x 5 cm  
\$ 2,200



Bevan Honey  
Born 1968 Perth WA

GT 3 2006  
Pine, Plywood, Masonite, Automotive  
Acrylic  
85 x 85 x 4 cm  
\$ 3,500

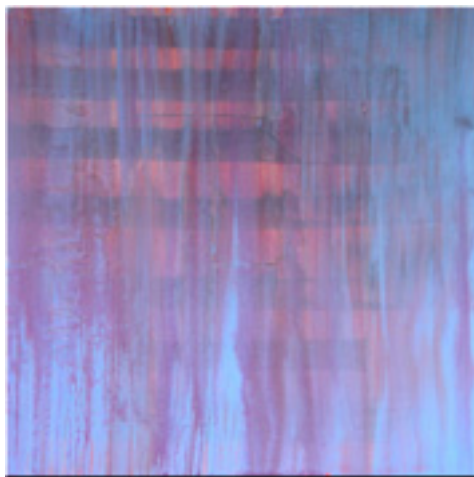


GT 4 2006  
Pine, Plywood, Masonite, Automotive  
Acrylic  
85 x 85 x 4 cm  
\$ 3,500



Simon Gevers  
Born 1956 Fremantle WA

Limefield 2006  
Egg Tempera on Board  
85 x 85 x 3.5 cm  
\$ 2,200

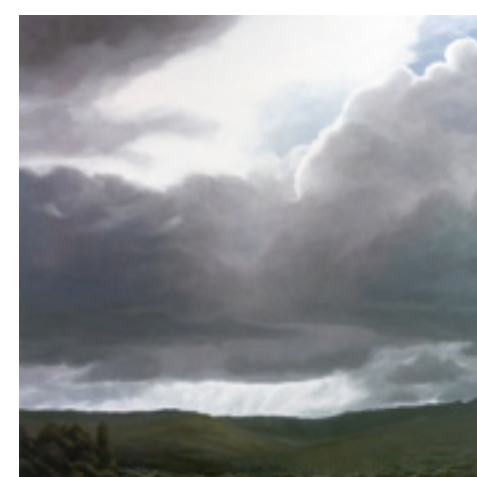


Sting 2006  
Egg Tempera on Board  
85 x 85 x 3.5 cm  
\$ 2,200

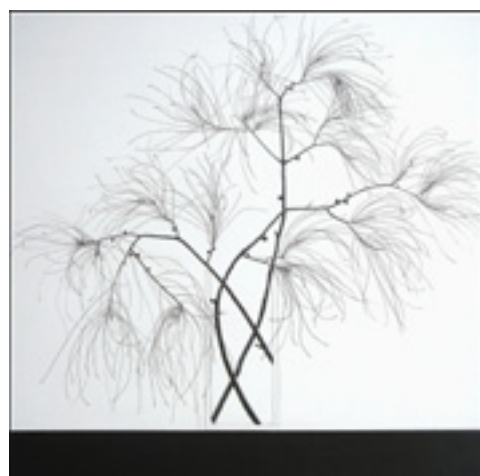


Jill Kempson  
Born 1961 Melbourne Victoria

View from Musiekgebouw 2006  
Oil over Gesso on Marine Ply  
85 x 85 x 1.2 cm  
\$ 5,500



Waychinicup - Clouds 2006  
Oil over Gesso on Marine Ply  
85 x 85 x 1.2 cm  
\$ 5,500



Jocelyn Gregson  
Born 1948 Perth WA

She Oak (Discipline XXII) 2006  
Wax, Black Acrylic and Gesso on Canvas  
85 x 85 x 4.5 cm  
\$ 3,800

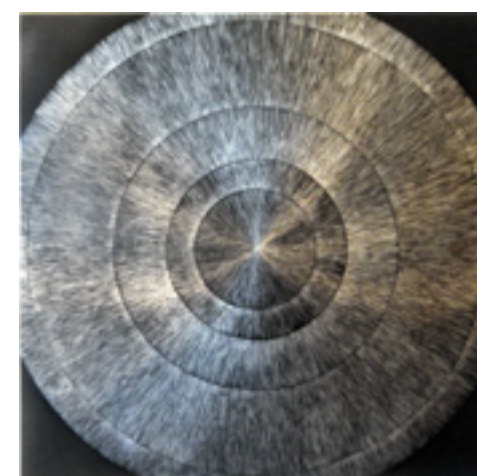


Wattle (Discipline XXIII) 2006  
Wax, Black Acrylic and Gesso on Canvas  
85 x 85 x 4.5 cm  
\$ 3,800



Brian McKay  
Born 1926 Meckering WA

Eclipse 2006  
Automotive Enamel on Etched and Sealed  
Aluminium  
85 x 85 x 4 cm  
\$ 6,500



Shield 2006  
Automotive Enamel on Etched and Sealed  
aluminium  
85 x 85 x 4 cm  
\$ 6,500





Howard Taylor (1918 -2001)  
Born Hamilton Victoria

Installation View  
Exhibition 2006



Heightened with White 1980  
Oil on Marine Ply Panel  
Zinc Coated Metal Cylinder  
121.5 x 182.5 x 25.8 cm  
POA

Untitled [Wall Construction] 2001  
Acrylic on Marine Ply Panels  
70 x 100 x 10.5 cm  
POA



Phillip McLeish  
Born 1950 Perth WA

Bay 2006  
Diptych  
Oil on Canvas  
Each panel 85 x 85 x 3.5 cm  
Overall 85 x 172 x 3.5 cm  
\$ 3,500



Tom Müller  
Born 1975 Basle Switzerland

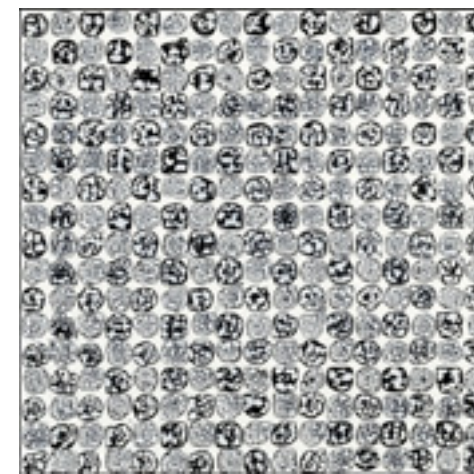
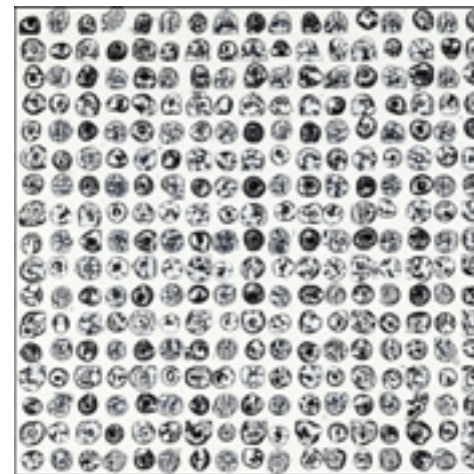
Level 7 2006  
Diptych  
Vinyl (900 series) on Acrylic Panels  
Each panel 85 x 85 x 1 cm  
Overall 85 x 171 x 1 cm  
\$ 3,800



Bruce Slatter  
Born 1971 England

Size 10 Dolphin 2006  
Acrylic on Plywood  
85 x 85 x 4 cm  
\$ 2,200

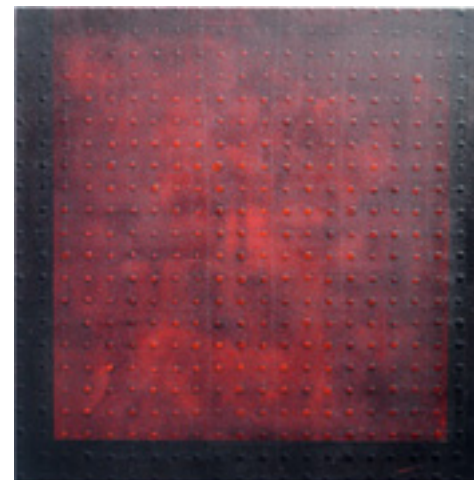
Clamp and Level 2006  
Acrylic on Plywood  
85 x 85 x 4 cm  
\$ 2,200



Alex Spremberg  
Born 1950 Hamburg Germany

Moments No. 1 2006  
Enamel on Wood  
85 x 85 x 3 cm  
\$ 4,500

Moments No. 3 2006  
Enamel on Wood  
85 x 85 x 3 cm  
\$ 4,500



John Teschendorff  
Born 1942 Melbourne Victoria

History of Ideas - Series IV/XXXI  
Plague (this is war!) 2006  
Oil and Acrylic on Canvas  
85 x 85 x 5 cm  
\$ 3,200

History of Ideas - Series IV/XXX  
Silence (what bombs do) 2006  
Oil and Acrylic on Canvas  
85 x 85 x 5 cm  
\$ 3,200

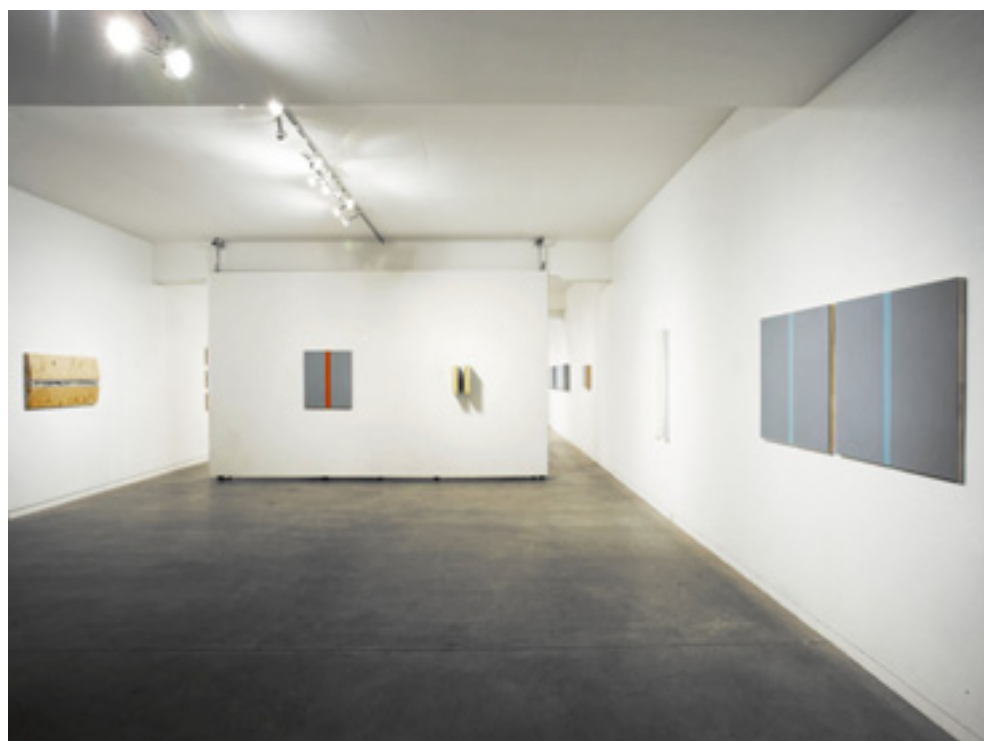


This project has been assisted by the Australian Government through the Australia Council, its arts funding and advisory body





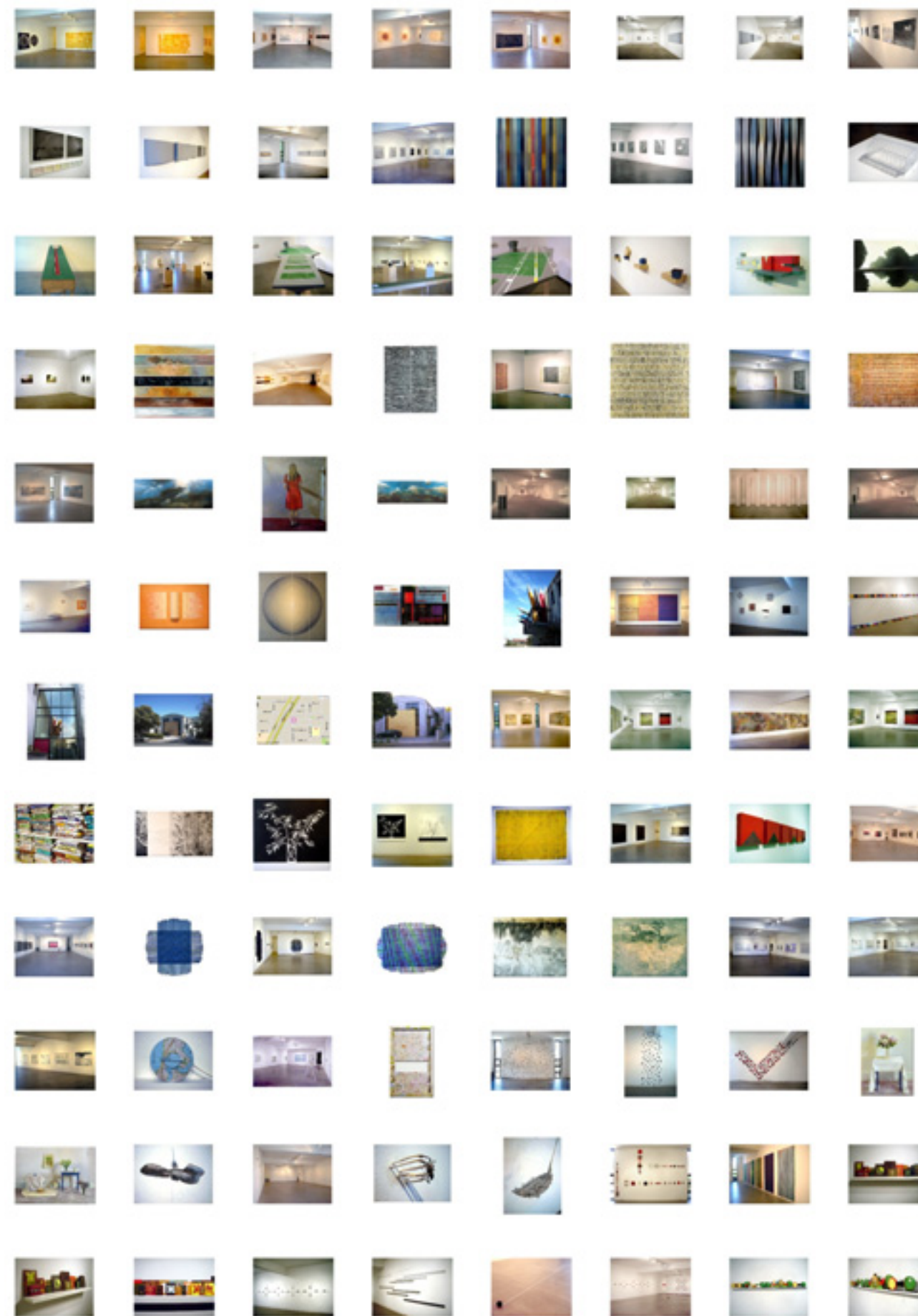
Howard Taylor ::: Galerie Düsseldorf ::: Inaugural exhibition in new purpose built gallery 1995



Bevan Honey : PROJECT ::: Installation View 7 May - 4 June 2006 ::: Galerie Düsseldorf

G A L E R I E D Ü S S E L D O R F

9 Glyde Street Mosman Park WA 6012 Australia tel / fax + 61 8 9384 0890  
 Email ::: gd@galeriedusseldorf.com.au website ::: www.galeriedusseldorf.com.au  
 Established 1976 ::: Directors : Magda + Douglas Sheerer Mobile 0417 926 132



G A L E R I E D Ü S S E L D O R F ::: Celebrating 30 Years ::: 2006

Melbourne Art Fair ::: Stand E 13